

HOUSE  
OF  
*Clarkson*



01

Carrington House  
Snettisham, Norfolk

02

Wilmington Square  
Clerken Well, London

03

Lofts on the Park  
Victoria Park, London

04

House in Hastings  
Old Town, Hastings

05

Georgian Russell  
Old Town, Hastings

06

The Boat, Tolerance  
London Canals

House of Clarkson is a collection of six boutique retreats, each with its own unique visual identity. Sleeping 2–20 guests, these beautifully curated properties have been created with love, care, and design expertise.

From a Regency townhouse in Hastings to a luxurious canal boat in London, they offer the perfect backdrop for a wide range of stays.





01

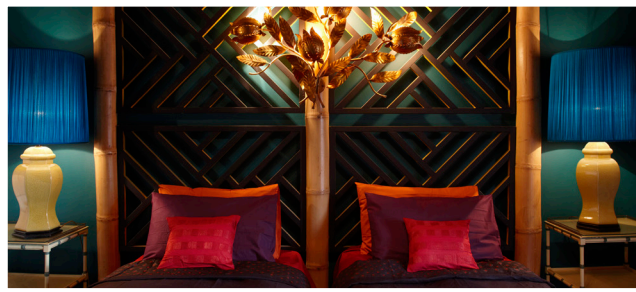
## Carrington House Snettisham, Norfolk

- Sleeps 18/20 in nine bedrooms
- North Norfolk coast
- Hot tub
- Disco room
- Dog friendly
- Private garden
- Central village location

Combining the facilities of a boutique hotel with the individuality of a historic Grade II-listed property, Carrington House has been radically transformed by House of Clarkson to offer a stylish venue for exclusive gatherings. Quirky, chic, and equipped with its own sound-proofed private nightclub in the basement, the house is ideal for anything from birthday celebrations to sophisticated hen parties.







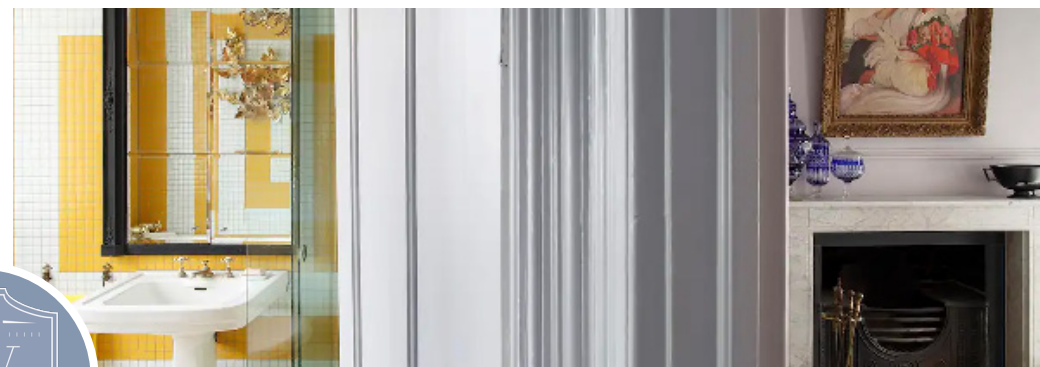
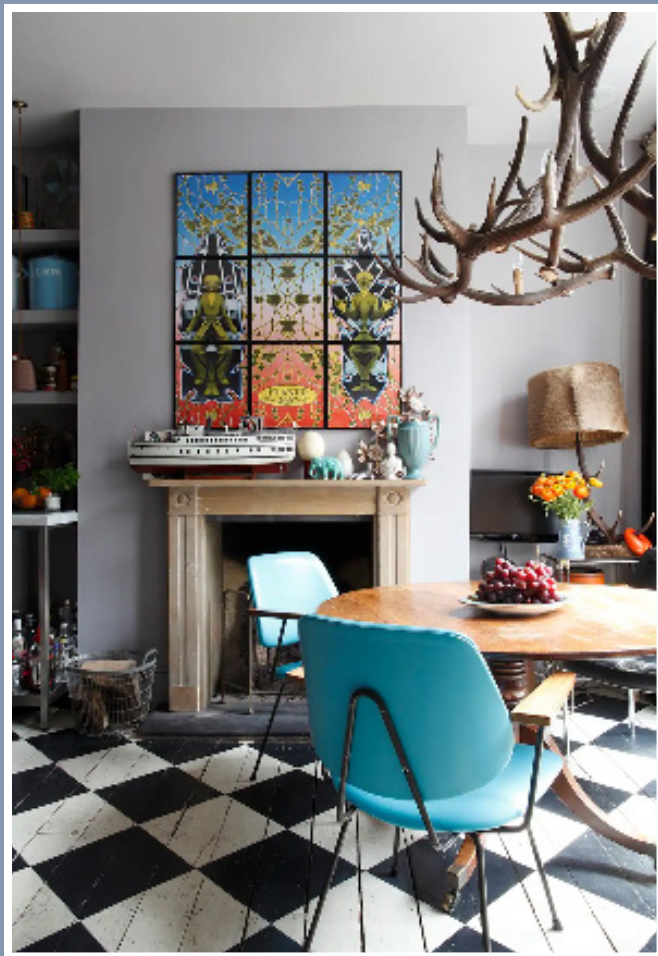


02

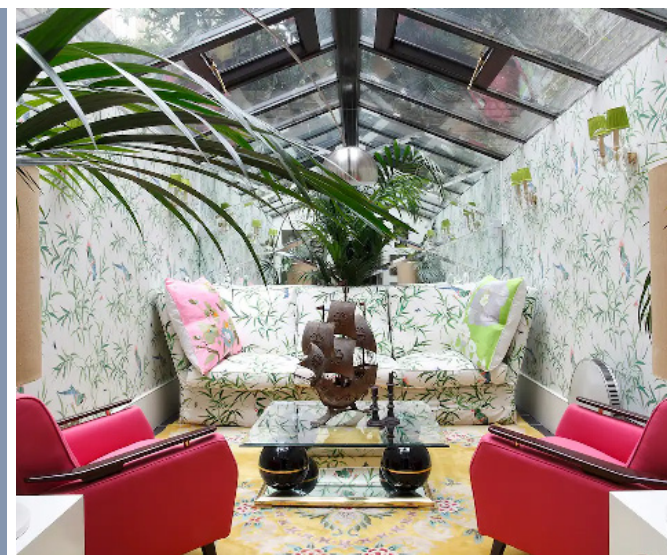
## Wilmington Square Clerken Well, London

- Sleeps six
- Central London location
- Converted Georgian dairy
- Opposite Exmouth Market
- Four-storey house
- Unique interiors

Nestled in the heart of London's fashionable Clerkenwell, Yardley Street is a Grade II-listed period property. Arranged over four floors, with working fireplaces and statement chandeliers, it has a kitchen/dining room on the ground floor, a cosy cinema room, and a glass-ceilinged reception room in the basement. The house's central location makes it the perfect base for visitors to the capital.











# 03

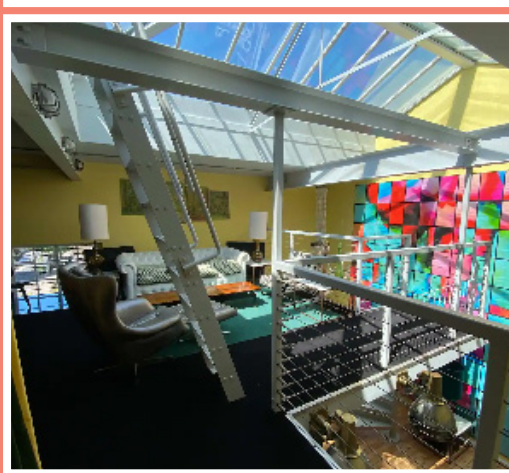
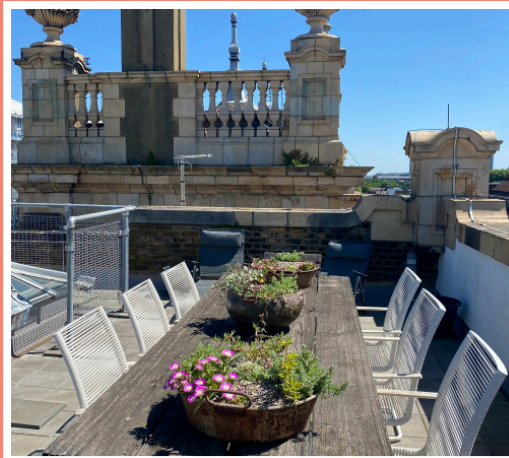
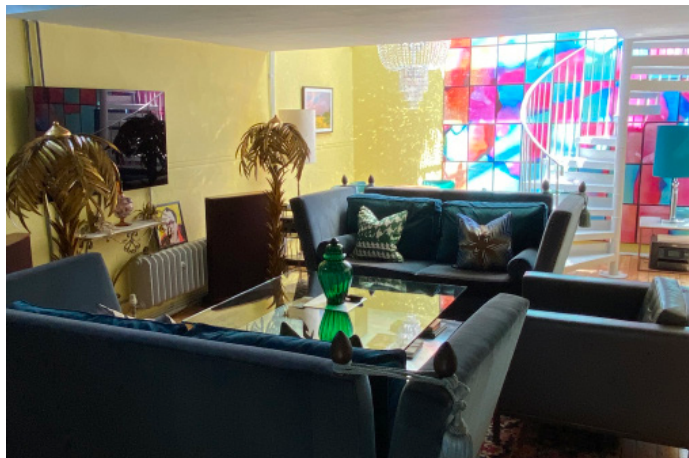
## Lofts on the Park Victoria Park, London

- Sleeps four/six
- Penthouse loft living
- Roof terrace
- Opposite the park
- In the heart of fashionable East London
- Secure parking space

Lofts on the Park is a penthouse apartment on two floors near London's Victoria Park. Set in a private gated community in a converted Edwardian school, it has an airy, open-plan layout and a terrace offering spectacular city views. Ideally located for the bars and restaurants of Hackney Wick and Homerton, it is also a short taxi-ride from London's O2 arena.







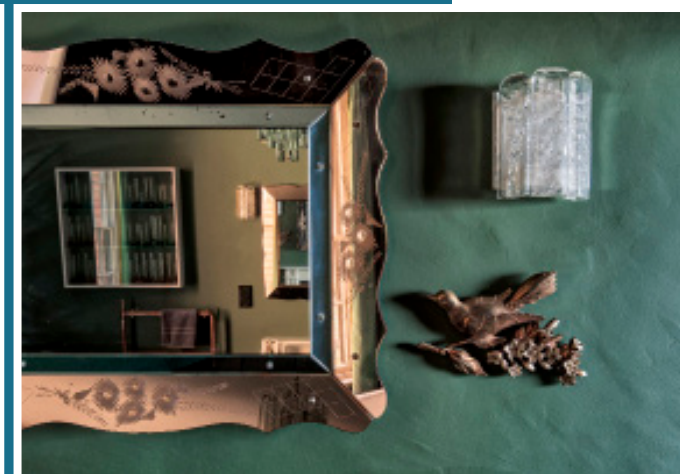




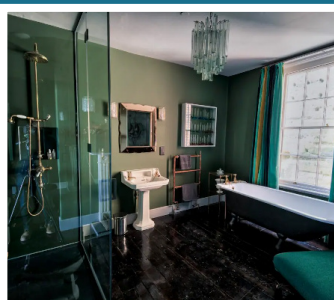
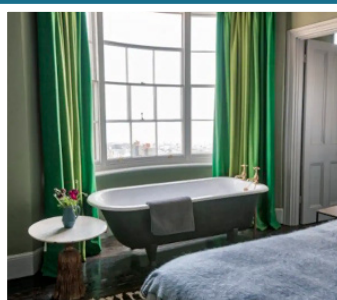
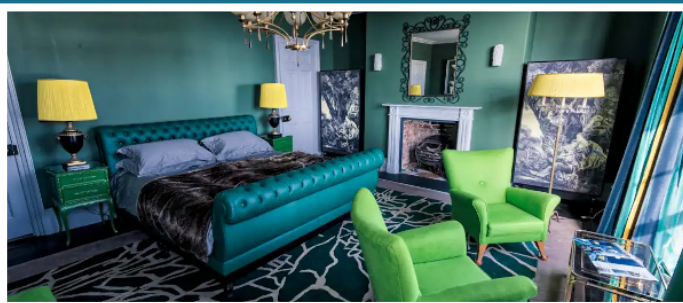
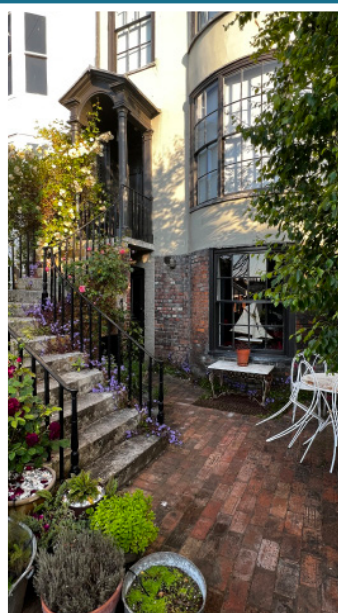
## House in Hastings Old Town, Hastings

- Sleeps 10
- Five-storey Regency house
- Stunning views of Hastings Old Town
- Grotto garden
- Short walk from the beach
- Dog friendly

The House in Hastings sits majestically on one of the town's most historic streets, Croft Road on West Hill. Gloriously glamorous and divinely decadent, it has five stunning bedrooms – with sea views on every floor – four bathrooms (plus two further cloakrooms), working fireplaces, a private terrace with sea view and expansive entertaining spaces, including a sitting room, cinema room and dining room that seats 10.







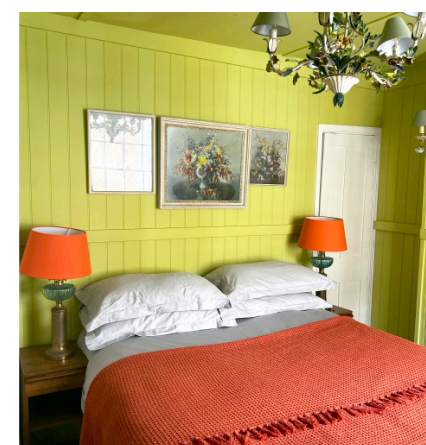


15

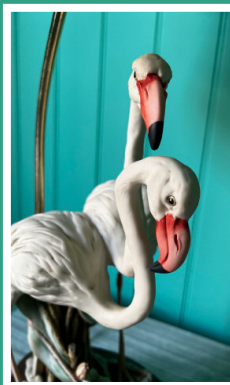
# Georgian Russell Old Town, Hastings

- Sleeps six
- Old Town location
- Spacious duplex
- Near beach
- Dog friendly
- Located on vibrant George Street

Situated in the heart of Hastings's most vibrant neighbourhood, House of Clarkson's George Street apartment is the ultimate urban retreat. Arranged on two floors, this tongue-and-groove-panelled maisonette provides the perfect base from which to explore everything Hastings Old Town has to offer. It has three double bedrooms and three reception rooms offering ample space to spread out and chill out.







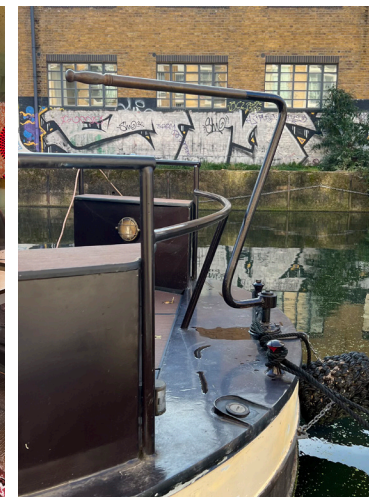


# 06

## The Boat, Tolerance London Canals

- Sleeps four
- Wide-beam canal boat
- Central London private mooring
- Log burner
- Dog friendly
- Sun deck

Located in a secure private mooring in East London's Limehouse Cut, Tolérance is a canal boat with a difference – a floating home-tel with décor reminiscent of a chic hotel suite. With its charming sun deck and cosy log burner, this bijou residence is the ultimate urban hideaway, and the ideal place to experience laid-back life on the water.









HOUSE |  
OF  
*Clarkson*

